

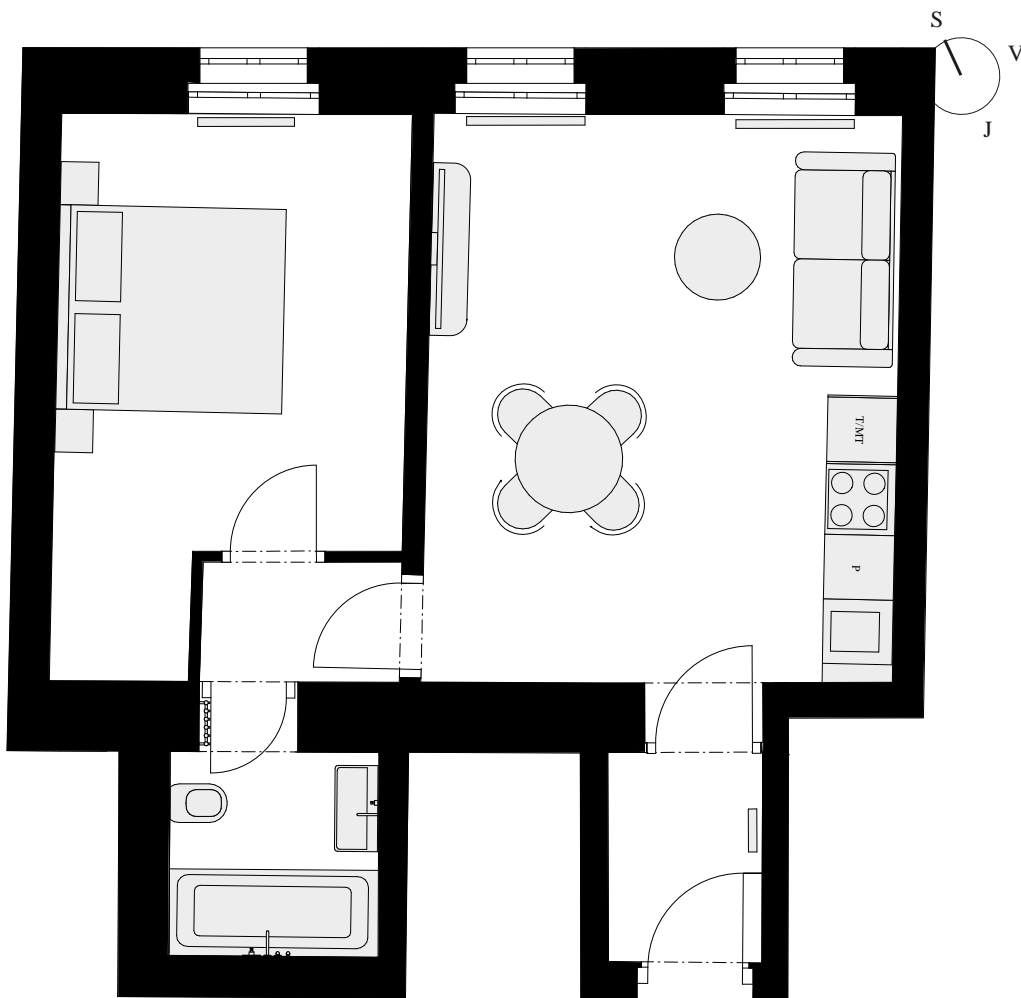


## APARTMENT 5 · 2+kk

2nd floor ♦ 52,4 m<sup>2</sup> ♦ PERSONAL / COOPERATIVE

5.01	Hall	3,00 m <sup>2</sup>
5.02	Living room with kitchen	23,79 m <sup>2</sup>
5.03	Corridor	2,06 m <sup>2</sup>
5.04	Bedroom	14,97 m <sup>2</sup>
5.05	Bathroom	4,56 m <sup>2</sup>
Usable area of rooms		48,38 m <sup>2</sup>
Vertical constructions		2,43 m <sup>2</sup>
0.5	Cellar	1,60 m <sup>2</sup>
TOTAL AREA		52,40 m <sup>2</sup>

10 490 000 Kč



Floor area of the apartment according to Government Regulation No. 366/2013 Coll. means the total area of all rooms in the apartment as well as the area under load-bearing and non-load-bearing walls, cladding and cores (referred to here as vertical structures). This is an area that is defined by the perimeter walls of the apartment. The areas of individual rooms are indicative only. The equipment depicted in the apartment plans (furniture, kitchen, electrical appliances, etc.) is not part of the delivery. The scope of delivery is specified in the standard. The developer reserves the right to make changes.



Position  
in the building

Location  
on the floor

